

Beyond control knobs... Components and assemblies within your reach.

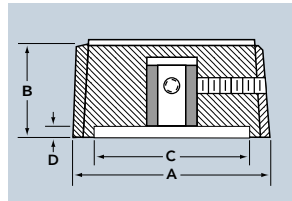
## Instrument Soft Touch Knobs

EHC's new "soft touch" knobs come in a variety of colors and can even be made in custom colors and are available with custom markings. Shaft configurations include a bushing with 2 set screws, a spring clip, a knurled plastic shaft or a "D" flat shaft.

### STP Series



Round w/Pointer

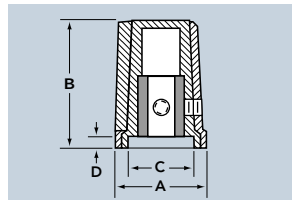


PART NUMBER

PART NUMBER	A Diam.	B Height	C Diam.	D Depth	TO COMPLETE PART NUMBER		
					Style	Shaft Hole	Color
ST-1P_____	.45	.55			NP	1	BB
ST-2P_____	.50	.68		2		GB	
ST-3P_____	.61	.55	.43	.09		3	YB
ST-5P_____	.75	.37	.50	.05		4	RB
ST-6P_____	1.15	.54	.88	.10		5	
ST-7P_____	1.50	.60	1.24	.10			



Skirted w/Pointer



PART NUMBER

PART NUMBER	A Diam.	B Height	C Diam.	D Depth	TO COMPLETE PART NUMBER		
					Style	Shaft Hole	Color
ST-1K_____	.57	.71	.41	.09	K	1	BB
ST-2K_____	.62	.84	.48	.09		2	GB
ST-3K_____	.73	.71	.58	.09		3	YB
ST-5K_____	.84	.45	.60	.05		4	RB
ST-6K_____	1.25	.63	.98	.10		5	
ST-7K_____	1.67	.73	1.41	.10			

ORDERING GUIDE FOR ST SERIES

Style	Diameter	Shaft Hole (or Spring)	Color
Plain or w/Indicator			
N-Plain Round	Indicate Part Number from Tables Above	1- 1/8" Round	BB- Black Matte
C-Round w/Indicator		2- 1/4" Round	GB- Gray Matte
D-Skirted Round		3- 1/8" "D" Hole*	YB- Yellow
E-Skirted w/Indicator		4- 1/4" "D" Hole*	RB- Red
F-Skirted Dial w/Arrow		5-.190 Round	LB- Blue
G-Plain Dial		*D-Flat on Pointer.	WB-White
P-Pointer		See table below for Push-on control styles.*	
K-Skirted Pointer			
S-Spinner			

SET SCREW SPECIFICATIONS

Series	Round	w/Ptr.	Each Knob Furnished with (2) Set Screws	
			1/8" Shaft Hole	1/4" Shaft Hole
1	.45	.57	4-40 UNC-3A	4-40 UNC-3A
2	.50	.62	4-40 UNC-3A	4-40 UNC-3A
3	.61	.73	4-40 UNC-3A	4-40 UNC-3A
5	.75	.84	4-40 UNC-3A	4-40 UNC-3A
6	1.15	1.25	4-40 UNC-3A	8-32 UNC-3A
7	1.50	1.67	4-40 UNC-3A	8-32 UNC-3A

CONTROL STYLES SPECIFICATIONS EXAMPLES FOR PUSH-ON KNOBS

Letter	Shaft Size	Height	Description
A	1/4" Knurl	3/8"	Standard Knurl- 24 Teeth
C	6mm diam. x 4.5mm Flat	3/8"	For Spring #79-06600P
V	.250" diam. x .156" Flat	13/32"	For Spring #79-02000P

If you require a non-standard spring style not shown in the above table please consult an EHC engineer for an alternate or custom solution.



EXAMPLE: ST-2P2YB2C

Series	Diameter	Style	Push-on* or Shaft Hole	Color	Set Screws	Concentric
	.500	Skirted Pointer	.250"	Yellow	Quantity	
ST-	2	K	2	YB	2	C

\* For Push-on knobs use letter designation for spring (Control Style) style. Push-on knobs require no set screws.